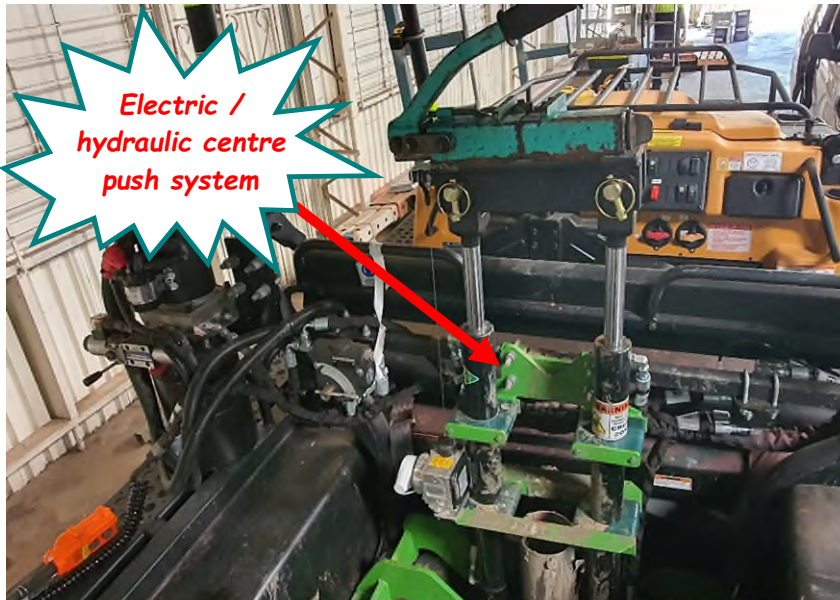




## RIG DATA SHEET MUDSKIPPER (IGS04 & 23)



Based on Argo All-Terrain vehicle – 100% amphibious  
Changeable soft tyres or rubber tracks – ground pressure ~8-10kPa  
Total mass ~1,000-1,100kg (equipped to sample or test)  
Maximum safe side slope – 16 degrees  
Can sample and test in very shallow water (surface veneer)  
Can self-winch to recover in extreme slimes conditions  
Has worked on several mine tailings dams  
Typically works in tandem with our other Rigs

### Test Types (only in very soft stuff)

- CPT and CPTu and Seismic CPTu
- Ball Cone
- DMT & SDMT/ SPDMT, Medusa DMT
- Direct-Push Vane Shear

### Also (only in very soft stuff)

- Other very soft sediment sampling
- Ranger & Vertek sampling