

Insitu Geotech Services Pty Ltd

IGS

ABN 46 091 597 661



new 10t 4x4 rig



20t all-terrain rig

Contact: Mark Chapman
Phone: 0437-824-776
Fax: 07-3358-4366
Email: mark@insitu.com.au

Michael O'Rourke
0407-467-025
mick@insitu.com.au

Mailing Address
187 Elliott Road
BANYO Qld 4014

reducing geotechnical uncertainty

RIG DATA SHEET

BABY JAYNE (BJ01)

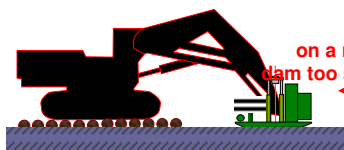
25 June 2019



excavator mounted in extreme access conditions

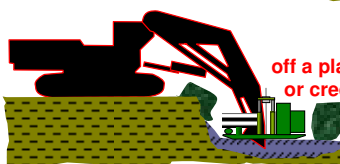
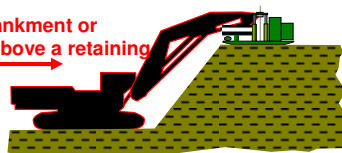


self-wincing on a "site from hell"



on a mud flat or tailings dam too soft for "anything"

up an embankment or mound or above a retaining



off a platform, or in a drain or creek, even water-filled



On a jack-up barge
Darling Harbour

In a basement
2.2m headroom



Multi-purpose rig on sled with own winch
Year Built: 2010

Pusher capability (up to 150kN)
depends on mounting arrangement

On sled W=0.7m L=2.4m H=1.2m
Weight = 1.4t on sled Up to 3.5t on outriggers

Test Types:

- Geomil CPT and CPTu
- Tee-Bar
- DMT & SDMT
- Vane Shear

Also:

- Piezometers & Standpipes
- All IGS Samplers

High Quality Insitu Testing

www.insitu.com.au

CPT, CPTu, Vane, DMT, SDMT