

## Contact IGS

[www.insitu.com.au](http://www.insitu.com.au)

0407 INSITU (0407 467 488)

Fax 07 3358 4366

## Contact Allan McConnell

[allan@insitu.com.au](mailto:allan@insitu.com.au)

0417 748 669

## Geotechnical Services

CPT & Piezocone

Dilatometer

Seismic Dilatometer

Vane Shear

Tee-Bar

Piston & Eziprobe Sampling

Piezometer Installation

In Situ Permeability

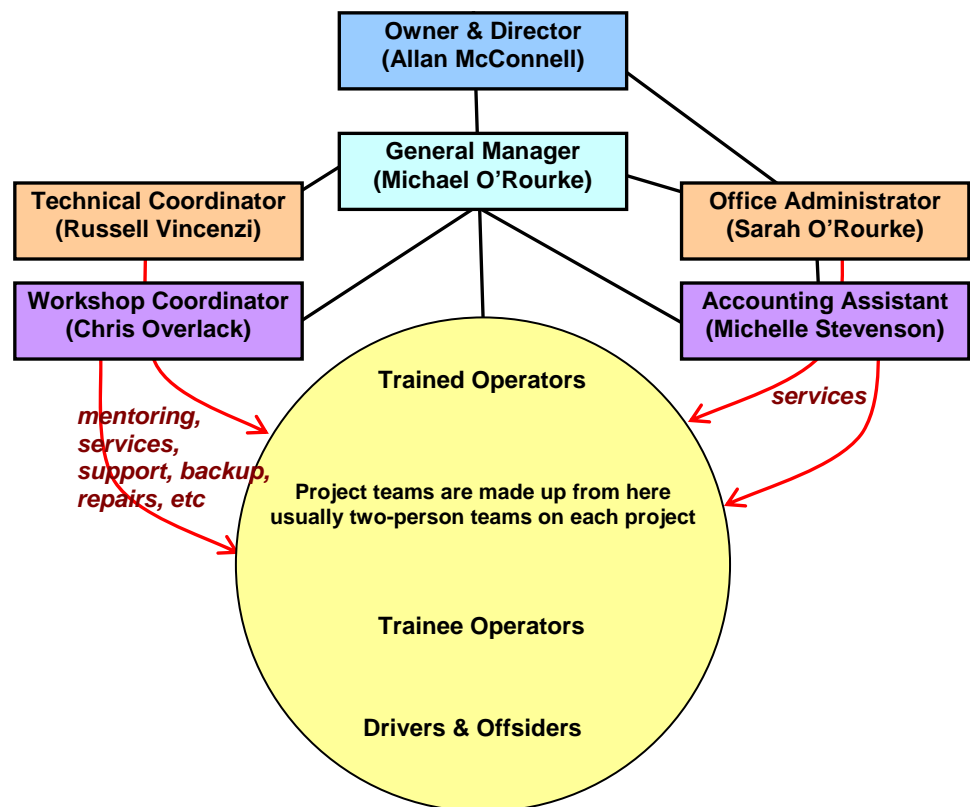
# Policy Statement

IGS (Insitu Geotech Services Pty Ltd) is one of Australia's leading specialist in situ testing contractors. We are based in Sydney, Newcastle, Brisbane Melbourne & Townsville but have done work as far afield as Olympic Dam, Weipa, Cairns, Mount Isa and Kiunga in PNG.

The company started in business in the year 2000 to introduce up-to-date in situ testing technology into the market with the objective of "reducing geotechnical uncertainty". IGS is:

- Owned and operated by Allan McConnell, a well-known geotechnical engineer (FIE Aust) who has had 40+ years experience working on most parts of the east coast of Australia.
- Staffed in the field by a small team of highly motivated people who have been trained in-house under the overview of McConnell, supplemented by training at international conferences and focused training courses. Our personnel can work in the field unsupervised and self-managed.

The company has a very flat organisational structure and runs on a "minimal hierarchy" philosophy where relatively less experienced (but properly trained) individuals may be placed in charge of a job, assisted by an individual of greater experience – roles are interchanged frequently – all part of the multi-skilling of the operation. The organisational chart shown below is thus operated flexibly on a day-to-day basis.



Allan J McConnell  
(Owner & Director)