

**another
access
challenge
solved**

IGS News

Contact IGS
www.insitu.com.au
 0417-748-669
 Fax 07 3358 4366

Contact Allan McConnell
allan@insitu.com.au
 0417 748 669

Geotechnical Services
 CPT & Piezocone
 Dilatometer
 Seismic Dilatometer
 Vane Shear
 Tee-Bar
 Piston & Eziprobe Sampling
 PPI Piston Sampling
 Piezometer Installation
 In Situ Permeability



The challenge:
 how to access and
 CPTu test on a
 slightly crusted
 coal tailings dam?

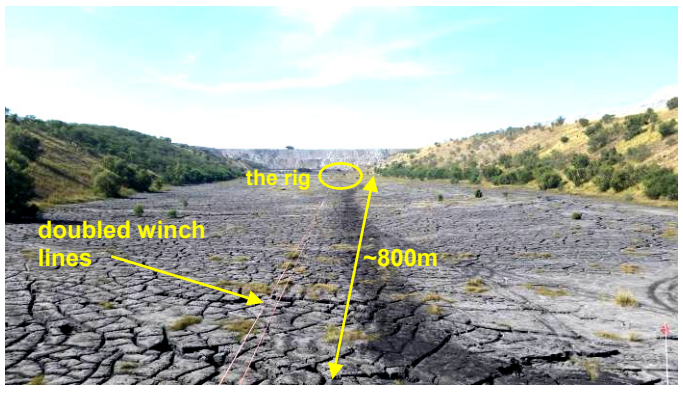


we winched around 800m down this site

Step 1: our skid-mounted rig Baby Jayne is purpose ballasted to 3t mass using lead weights*
 applied ground pressure is only 9.6kPa but still the surface indents markedly

* IGS owns 11t of lead ballast weights and we use them for many applications

Step 2: we winched the rig and testing gear to all test locations, using an IGS devised and trialed safe winching process
 winching distance approx 800m



our capstan winch

The outcome: a number of CPTu tests were successfully done to depths up to 25m and pore pressure dissipation tests were run
 the test data supported the access method employed for the very soft site
 the crust was very thin and the stuff below was very very very soft (a proper geo-description)

reducing geotechnical uncertainty