

**DMTs in
a landslide**

IGS News

Contact IGS

www.insitu.com.au

0407 INSITU (0407 467 488)

Fax 07 3358 4366

Contact Allan McConnell

allan@insitu.com.au

0417 748 669

Geotechnical Services

CPT & Piezocone

Dilatometer

Seismic Dilatometer

Vane Shear

Tee-Bar

Piston & Eziprobe Sampling

Piezometer Installation

In Situ Permeability

Field Fleet ("the girls")

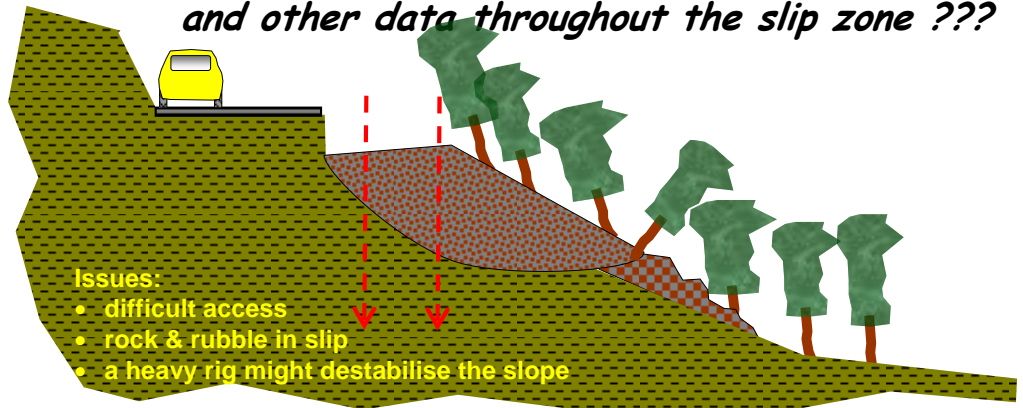


Baby Jayne – 15t portable



The Challenge

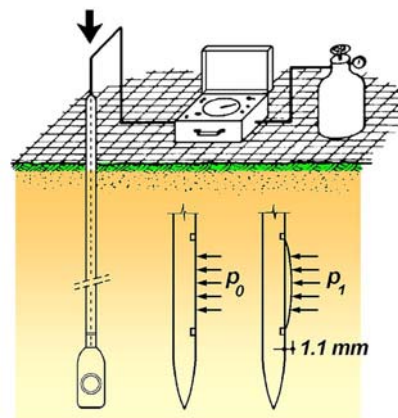
How to test through a landslide and get strength and other data throughout the slip zone ???



The Solution



Using Baby Jayne, a purpose-built mast and a heavy hydraulic hammer, IGS drove a series of DMT tests through the boulder-strewn slip material and tested several full-depth profiles



We thank our client SKM, for permission to discuss this project and use these photographs

reducing geotechnical uncertainty

IGS Technical Note

Contact IGS

www.insitu.com.au
0407 INSITU (0407 467 488)
Fax 07 3358 4366

Contact Allan McConnell

allan@insitu.com.au
0417 748 669

Geotechnical Services

CPT & Piezocone
Dilatometer
Seismic Dilatometer
Vane Shear
Tee-Bar
Eziprobe Sampling
Piezometer Installation
In Situ Permeability

Field Fleet ("the girls")

Esme – 10-20t all-terrain



Beryl – 15t 4 wheel drive



Eunice – 20t 6x4 bogey

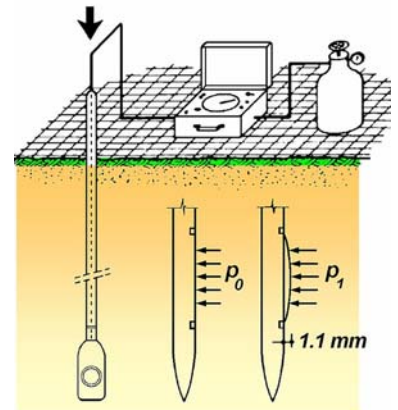


Baby Jayne – 15t portable

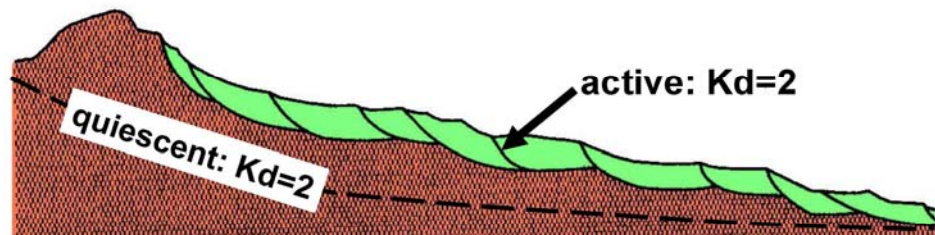


A use for DMT that you might not know

The information below comes from Professor Silvano Marchetti, "father" of the Dilatometer. IGS now undertakes DMT testing on a routine basis. All our rigs are equipped and all our operators are trained.

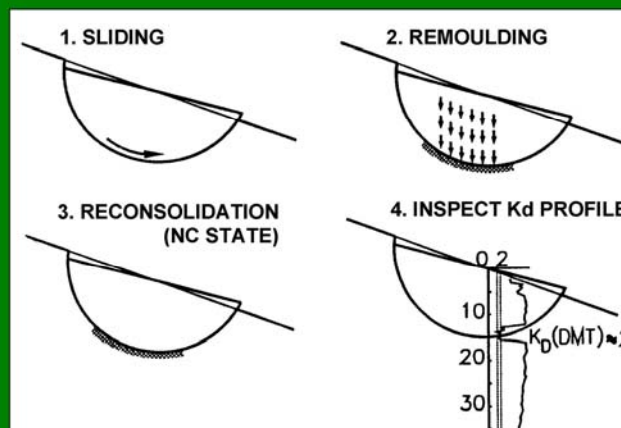


Need to detect slip surfaces?



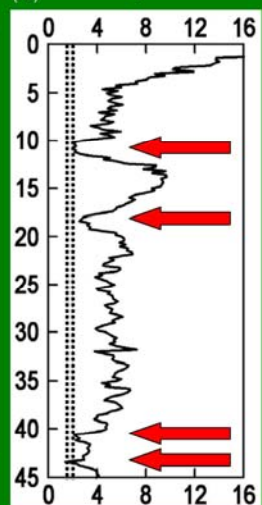
$K_d = 2 \rightarrow$ active/quiescent slip surface

Formation of $K_d = 2$ (NC) zones



$K_d = 2$ denotes NC clay

K_d by DMT



www.marchetti-dmt.it

reducing geotechnical uncertainty